

MONTHLY MEMBERSHIP PROGRESS REPORT

LOCATION CALIFORNIA

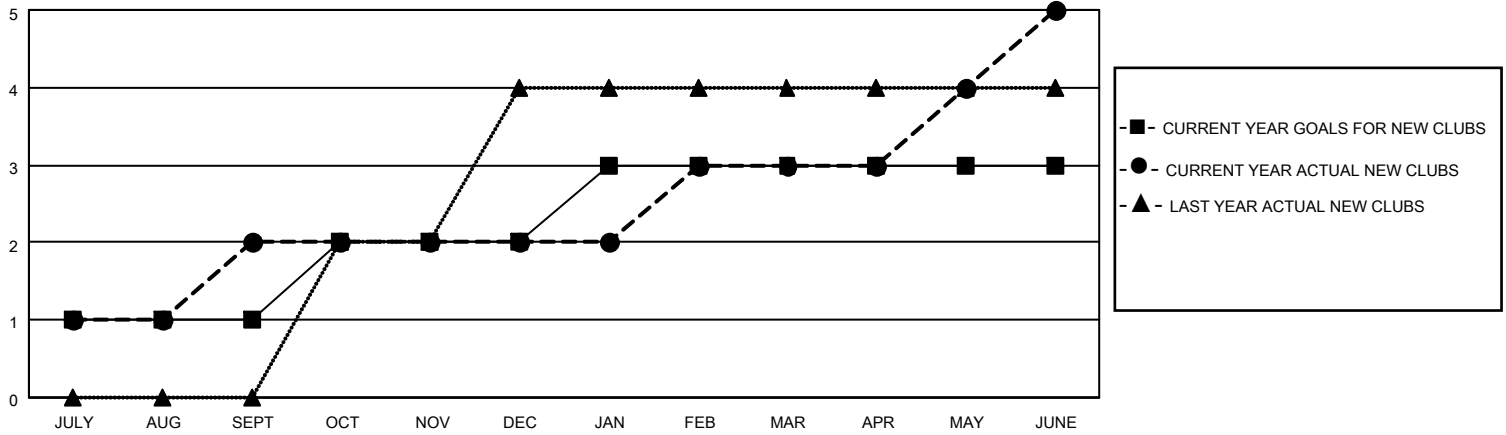
District 4 C4

Results as of: 6/30/2022

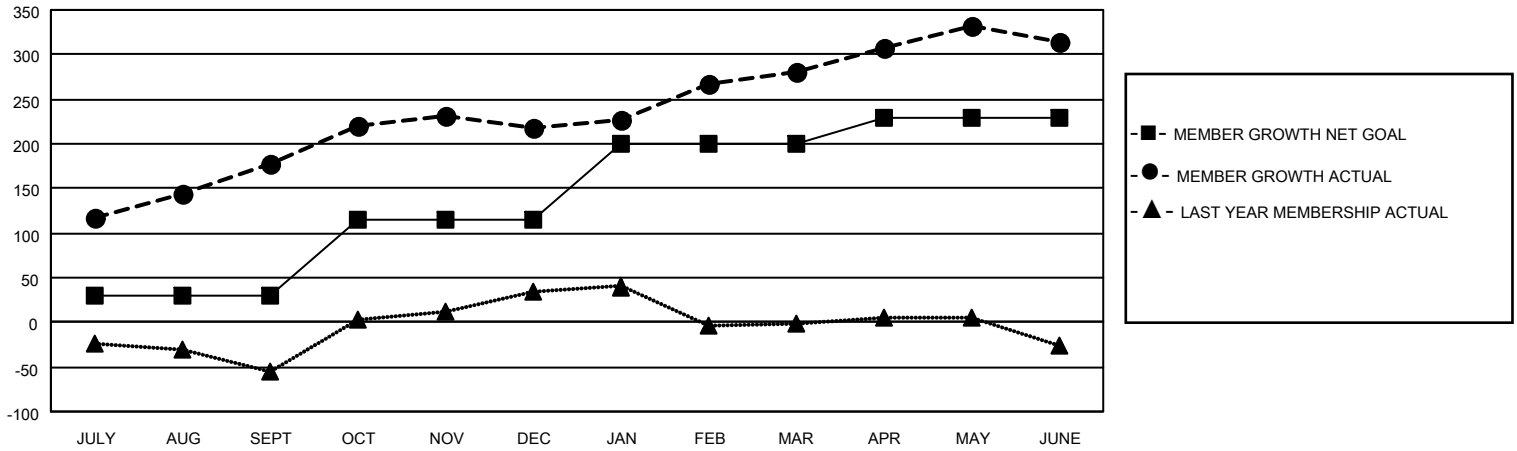
| Clubs | | | |
|-----------------------|---------------|-----------|---------------|
| RESULTS FOR 2021-2022 | | | |
| QUARTER | NEW CLUB GOAL | NEW CLUBS | DROPPED CLUBS |
| JULY/AUG/SEPT | 1 | 2 | 0 |
| OCT/NOV/DEC | 1 | 0 | 0 |
| JAN/FEB/MAR | 1 | 1 | 0 |
| APR/MAY/JUNE | 0 | 2 | 0 |

| Members | | | |
|-----------------------|------------------------|----------------------|---|
| RESULTS FOR 2021-2022 | | | |
| QUARTER | MEMBER GROWTH NET GOAL | MEMBER GROWTH ACTUAL | DROPPED MEMBERS ACTUAL (including transfers) |
| JULY/AUG/SEPT | 30 | 231 | 50 |
| OCT/NOV/DEC | 85 | 76 | 34 |
| JAN/FEB/MAR | 85 | 121 | 51 |
| APR/MAY/JUNE | 30 | 96 | 63 |

GOALS AND ACTUAL NEW CLUBS CUMULATIVE



GOALS AND ACTUAL MEMBERS CUMULATIVE



DROPPED CLUBS: 0

41 CLUBS OF 59 ADDED 1 OR MORE NEW MEMBERS

GENDER DISTRIBUTION

| | |
|----------------------|--------------|
| MALE | 953 (51.18%) |
| FEMALE | 909 (48.82%) |
| NON BINARY | 0 (0.00%) |
| PREFER NOT TO ANSWER | 0 (0.00%) |

DROPPED MEMBERS

[CLICK HERE FOR CUMULATIVE MEMBERSHIP DATA](#)

| | |
|----------------|------------|
| DECEASED | 20 |
| CLUB CANCELLED | 0 |
| OTHER | 178 |
| TOTAL | 198 |

| | |
|---------------------------------|-----|
| TOTAL FAMILY UNIT MEMBERS | 288 |
| FAMILY MEMBERS PAYING HALF DUES | 154 |